



RESEARCH TECHNOLOGIES

UNIVERSITY INFORMATION TECHNOLOGY SERVICES

Jetstream Overview: A national research and education cloud

ESIP Cloud Computing Cluster Monthly Call
May 6, 2019 – Online Lightning Talk

Jeremy Fischer – Jeremy@iu.edu - Indiana University

Manager, Jetstream Cloud,

UITS Research Technologies

Fischer, J. (2019). Jetstream Overview: A national research and education cloud. Webinar. Retrieved from <https://jetstream-cloud.org/research/publications.php>

NSF Funding Areas in HPC

Traditionally concentrated on enabling petascale capability

- Blue Waters – 13.3 petaflops, 2012 (Frontera awarded late 2018, coming in 2019)
- Stampede – 9.6 petaflops, 2013 (extended to Stampede2 in 2017 – 18 petaflops)
- Comet – ~2.0 petaflops, 2014

Has funded research into building clouds and computer science

- CloudLab (renewed for 2nd phase)
- Chameleon (renewed for 2nd phase)

Now funding clouds to do research

- Bridges (Hybrid system)
- Jetstream



What is Jetstream and why does it exist?

- NSF's first production cloud facility
- Focus on ease-of-use, broad accessibility
- User-selectable library of preconfigured virtual machines
- Provides **on-demand** *interactive* computing and analysis or persistent services such as gateways
- Enables *configurable* environments; ***programmable cyberinfrastructure***

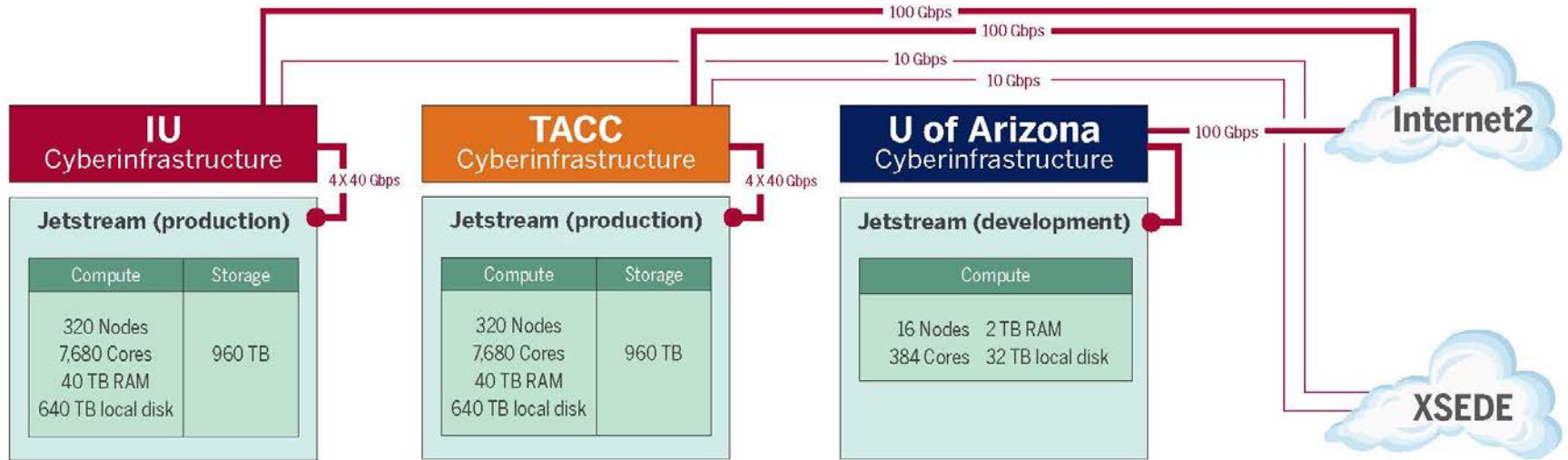


Who uses Jetstream?

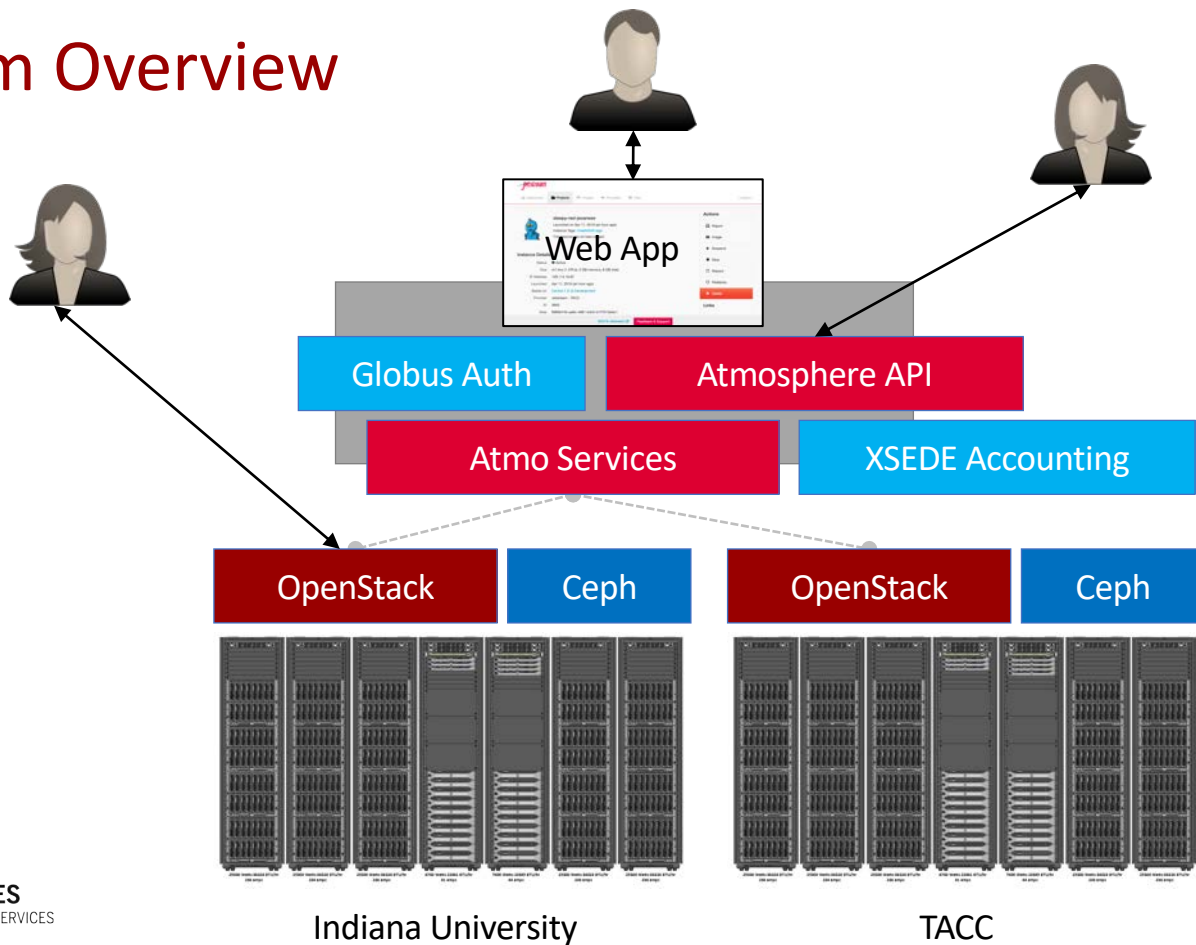
- The researcher needing a handful of cores (1 to 44/vCPU)
- Software creators and researchers needing to create their own VMs and workflows
- Science gateway creators using Jetstream as either the frontend or processor for scientific jobs
- STEM Educators teaching on a variety of subjects



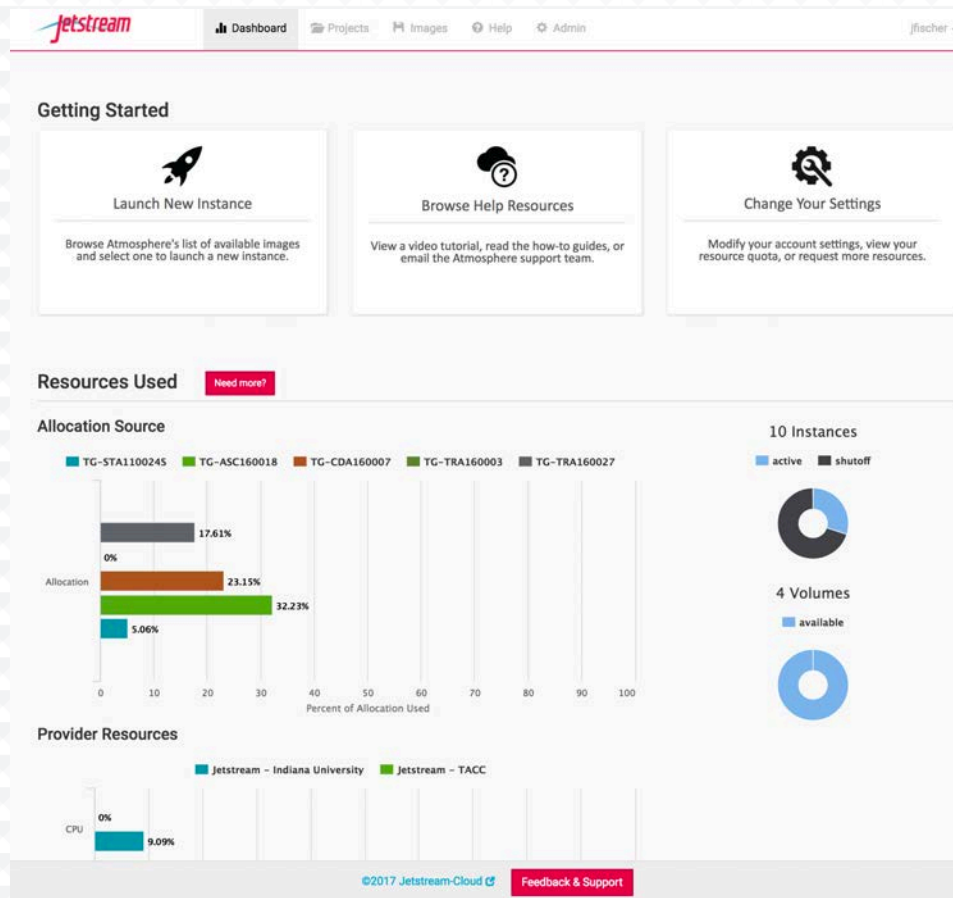
Jetstream System Overview



Platform Overview



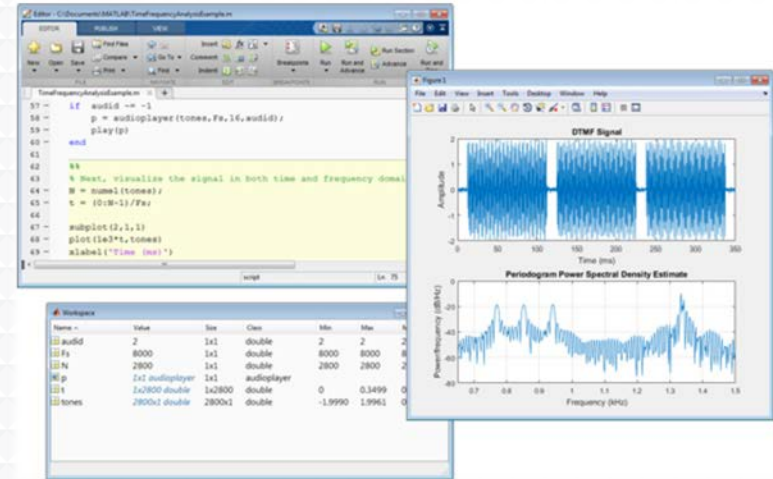
The Jetstream Atmosphere web interface



Discipline or area of interest	#of Jetstream allocations	SUs allocated on Jetstream	SU Increase/Decrease on Jetstream over previous year	% of SUs allocated on Jetstream	% of all SUs allocated on other XSEDE-supported systems
Behavioral Sciences	6	3,465,516	100% Increase	4.24%	0.61%
Biological Sciences	89	15,041,928	72.18% Increase	18.40%	3.59%
Biophysics	86	3,627,026	44.15% Decrease	4.44%	13.56%
Computer Science	72	6,883,269	33.28% Increase	8.42%	2.98%
Earth Sciences	37	5,476,250	37.06% Increase	6.70%	4.60%
Education and Training	128	16,599,512	2.62% Increase	20.31%	4.66%
Engineering	13	520,690	71.21% Increase	0.64%	1.75%
Materials Science	6	1,035,508	100% Increase	1.27%	13.89%
Mathematics	13	688,505	150.37% Increase	0.84%	0.90%
Molecular Science/Biochemistry	21	4,254,643	10.15% Decrease	5.20%	5.83%
Neuroscience	19	4,708,180	327.87% Increase	5.76%	1.98%
Physics	10	2,440,581	15.58% Decrease	2.99%	8.65%
Social Sciences and Humanities	28	2,409,633	192.27% Increase	2.95%	0.81%

Jetstream for engineering researchers (and others)

- Matlab and SimuLink and additional toolkits are installed on Jetstream
- You do NOT need to have a local license to use MATLAB on Jetstream
- If you are a researcher, and MATLAB or SimuLink... you're ready to go!
- If you are an engineering researcher, and you need other tools... let us know!



Jetstream for Education

Jetstream has been used in multiple graduate and undergraduate courses

- Management, Access, and Use of Big and Complex Data
- Multiple informatics and general bioinformatics courses
- Business Intelligence (big data and analysis)
- Research Topics in Music
- Multiple genetics and sequencing courses
- Multiple information security and assurance courses

Research Data Alliance workshops, Galaxy workshops, data analysis in finance using R, security and intrusion detection, and principles in cloud computing...



Jetstream usage highlights – 1 April 2019

- 414 active XSEDE projects covering 73 fields of science and over 2300 **active users** representing **207 institutions**
- **80%** of Jetstream users have **not used any other XSEDE system**
- >190M CPU hours allocated to XSEDE projects since June 2016
- 24 active science gateways
- 54 education/teaching allocations serving over 1000 students
- 1458 mean active VMs in previous qtr, 1590 peak active VM count
- **Highest** user satisfaction in most recent XSEDE survey



Requesting access to Jetstream

- Trial allocations available **TODAY**
 - <http://wiki.jetstream-cloud.org/Jetstream+Trial+Access+Allocation>
- You can request **startup** allocations **anytime**. (Startups are simple!)
- <http://wiki.jetstream-cloud.org/Jetstream+Allocations>
- You can request allocations for **educational** use **anytime**.
- Next submission period for large allocations is 15 Jun 2019 – 15 Jul 2019
- Research allocation: Project desc (≤ 10 pages) and Scaling doc (≤ 5 pages)
 - **We can help!**

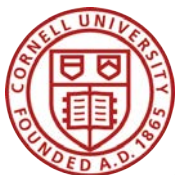


Where can I get help?

- **Wiki / Documentation:** <http://wiki.jetstream-cloud.org>
- User guides: <https://portal.xsede.org/user-guides>
- XSEDE KB: <https://portal.xsede.org/knowledge-base>
- Email: help@xsede.org
- Campus Champions: <https://www.xsede.org/campus-champions>
- Introduction to Jetstream Virtual Workshop: <https://cvw.cac.cornell.edu/jetstream/>
- Jetstream Allocations Virtual Workshop: <https://cvw.cac.cornell.edu/JetstreamReq/>



Jetstream Partners



funded by the National Science Foundation
Award #ACI-1445604



Questions?

- Project website: <http://jetstream-cloud.org/>
- Project email: help@jetstream-cloud.org Direct email: jeremy@iu.edu

License Terms

- Fischer, Jeremy. March 20, 2019. Jetstream Overview – ESIP Cloud Computing Cluster Monthly Call. Also available at: <http://Jetstream-cloud.org/research/publications.php>
- Jetstream is supported by NSF award 1445604 (David Y. Hancock, IU, PI)
- XSEDE is supported by NSF award 1053575 (John Towns, UIUC, PI)
- This research was supported in part by the Indiana University Pervasive Technology Institute, which was established with the assistance of a major award from the Lilly Endowment, Inc. Opinions presented here are those of the author(s) and do not necessarily represent the views of the NSF, IUPTI, IU, or the Lilly Endowment, Inc.
- Items indicated with a © are under copyright and used here with permission. Such items may not be reused without permission from the holder of copyright except where license terms noted on a slide permit reuse.
- Except where otherwise noted, contents of this presentation are copyright 2015 by the Trustees of Indiana University.
- This document is released under the Creative Commons Attribution 3.0 Unported license (<http://creativecommons.org/licenses/by/3.0/>). This license includes the following terms: You are free to share – to copy, distribute and transmit the work and to remix – to adapt the work under the following conditions: attribution – you must attribute the work in the manner specified by the author or licensor (but not in any way that suggests that they endorse you or your use of the work). For any reuse or distribution, you must make clear to others the license terms of this work.

