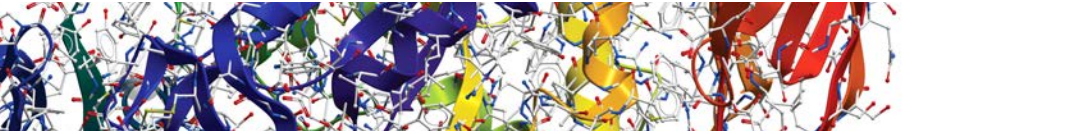


rt.iu.edu



**RESEARCH TECHNOLOGIES**  
UNIVERSITY INFORMATION TECHNOLOGY SERVICES



**RESEARCH TECHNOLOGIES**

UNIVERSITY INFORMATION TECHNOLOGY SERVICES

# Jetstream Overview: A national research and education cloud

Jetstream Overview – University of South Dakota  
October 9, 2019 – Vermillion, SD.

Jeremy Fischer – [Jeremy@iu.edu](mailto:Jeremy@iu.edu) - Indiana University

Manager, Jetstream Cloud, UITS Research Technologies

Fischer, J. (2019). Jetstream Overview: A national research and education cloud. Vermillion, SD. Retrieved from <https://jetstream-cloud.org/research/publications.php>

# NSF Funding Areas in HPC

Traditionally concentrated on enabling petascale capability

- Blue Waters – 13.3 petaflops, 2012 (Frontera awarded late 2018, coming in 2019)
- Stampede – 9.6 petaflops, 2013 (extended to Stampede2 in 2017 – 18 petaflops)
- Comet – ~2.0 petaflops, 2014 (Expanse awarded mid 2019, coming in 2020)

Has funded research into building clouds and computer science

- CloudLab (renewed for 2<sup>nd</sup> phase)
- Chameleon (renewed for 2<sup>nd</sup> phase)

Now funding clouds to do research

- Bridges (Hybrid system) – (Bridges2 awarded mid 2019, coming in 2020)
- Jetstream



# Expanding NSF XD's reach and impact

Around 350,000 researchers, educators, & learners received NSF support in 2015

- **Less than 2%** completed a computation, data analysis, or visualization task on XD/XSEDE program resources
- Less than 4% had an XSEDE Portal account
- **70%** of researchers surveyed\* claimed to be **resource constrained**

Why are the people not using XD/XSEDE systems not using them?

- Perceived **ease of access** and use
- HPC resources – the traditional view of what XSEDE offers - are often **not well-matched** to their needs
- They just don't need *that much* capability

\*XSEDE Cloud Survey Report - <http://hdl.handle.net/2142/45766>



“But I really don’t have research needs...I don’t need the national research cyberinfrastructure.”

– multiple researchers at small colleges and universities

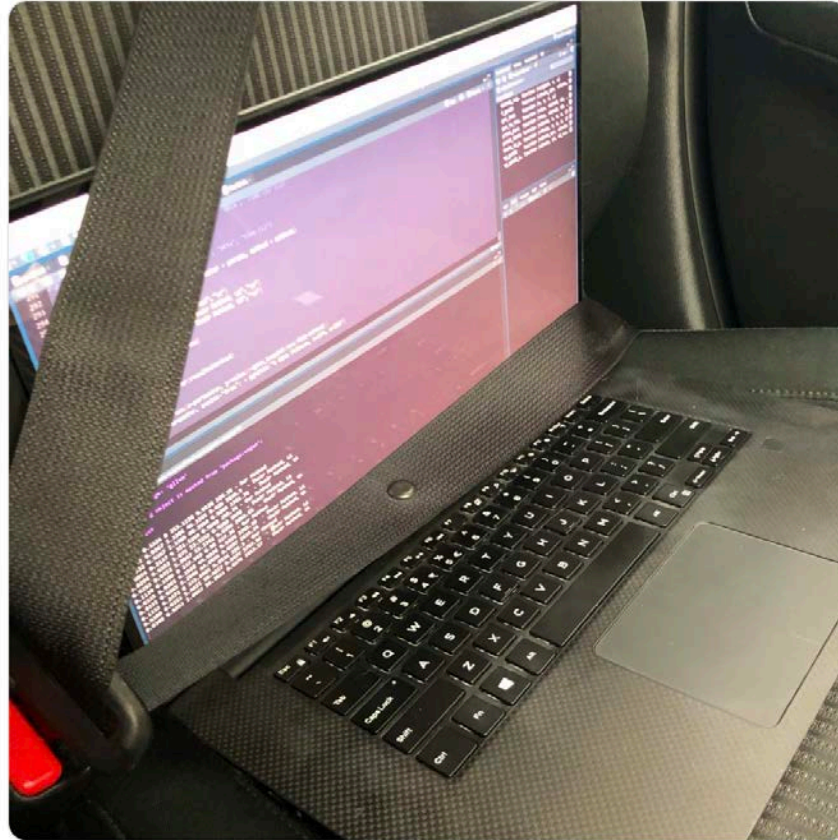






**Sarah Romanes** @sarah\_romanec · Mar 17

When you have to drive to work - but R has also only completed 10hrs of 24hrs worth of simulations. Can I go in the T2 lane with this thing? 🤔 #rstats #sydneytraffic



# What is Jetstream and why does it exist?

- NSF's first production cloud facility
- Focus on ease-of-use, broad accessibility
- User-selectable library of preconfigured virtual machines
- Provides **on-demand** *interactive* computing and analysis or persistent services such as gateways
- Enables *configurable* environments; ***programmable cyberinfrastructure***



# Who uses Jetstream?

- The researcher needing a handful of cores (1 to 44/vCPU)
- Software creators and researchers needing to create their own VMs and workflows
- Science gateway creators using Jetstream as either the frontend or processor for scientific jobs
- STEM Educators teaching on a variety of subjects





# What Jetstream isn't...

- It's not traditional HPC
- There's no shared filesystem (think cloudy!)
- There's no high-end interconnect fabric (keep thinking cloudy!)
- There aren't GPUs (yet...they're coming!)
- It isn't Amazon, Azure, or GCE (similar, but...)



# HPC vs Cloud

Adapting to a different environment:

- No reservations, no queueing – more interactive usage
- Being your own admin – hey, we have root!\*\*
- You really can have almost any (linux) software you want\*\*
- Users seem to like few/no scheduled downtimes

\*\* Here there be dragons...



# Jetstream and way of the cloud...

- **Cloudy Technologies:** clouds are more than just virtual machines (VM)
  - **Old way:** robust (expensive) infrastructure, weak (cheap) software
    - You expect the hardware to not fail
    - State is maintained in volatile data structures
  - **Cloudy way:** commodity infrastructure, robust software
    - Expect & plan for infrastructure to fail
    - Put intelligence into the software to handle infrastructure failure
- **And my favorite...**



# Thinking about VMs...

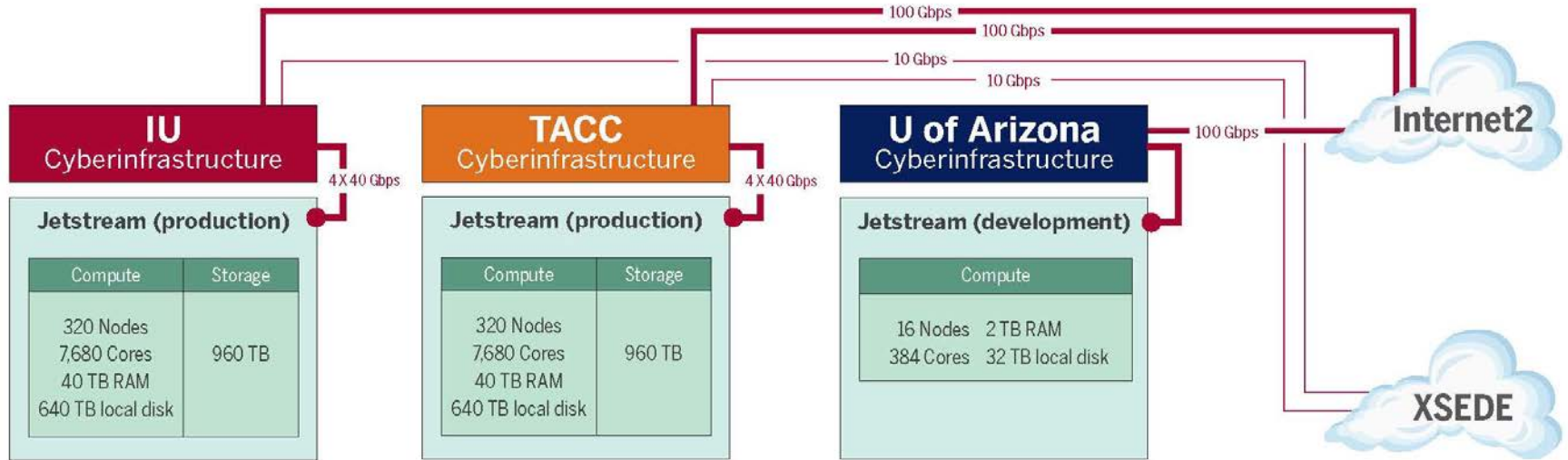
Cows, not pets: pets take great amount of care, feeding, and you name them; cows you intend to have high turnover and you give them numbers.

-- Mike Lowe (Jetstream architect)

\*\*some caveats for gateways...

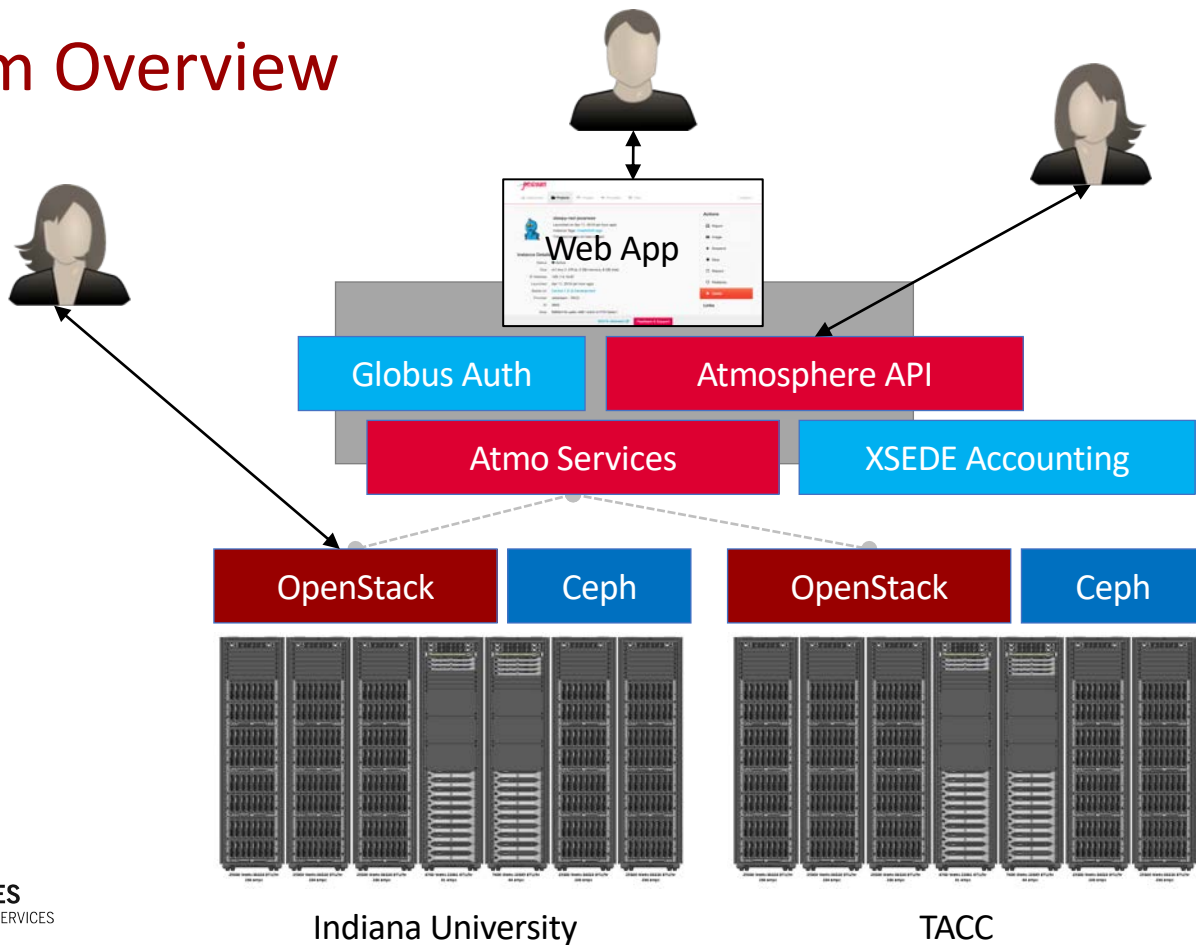


# Jetstream System Overview

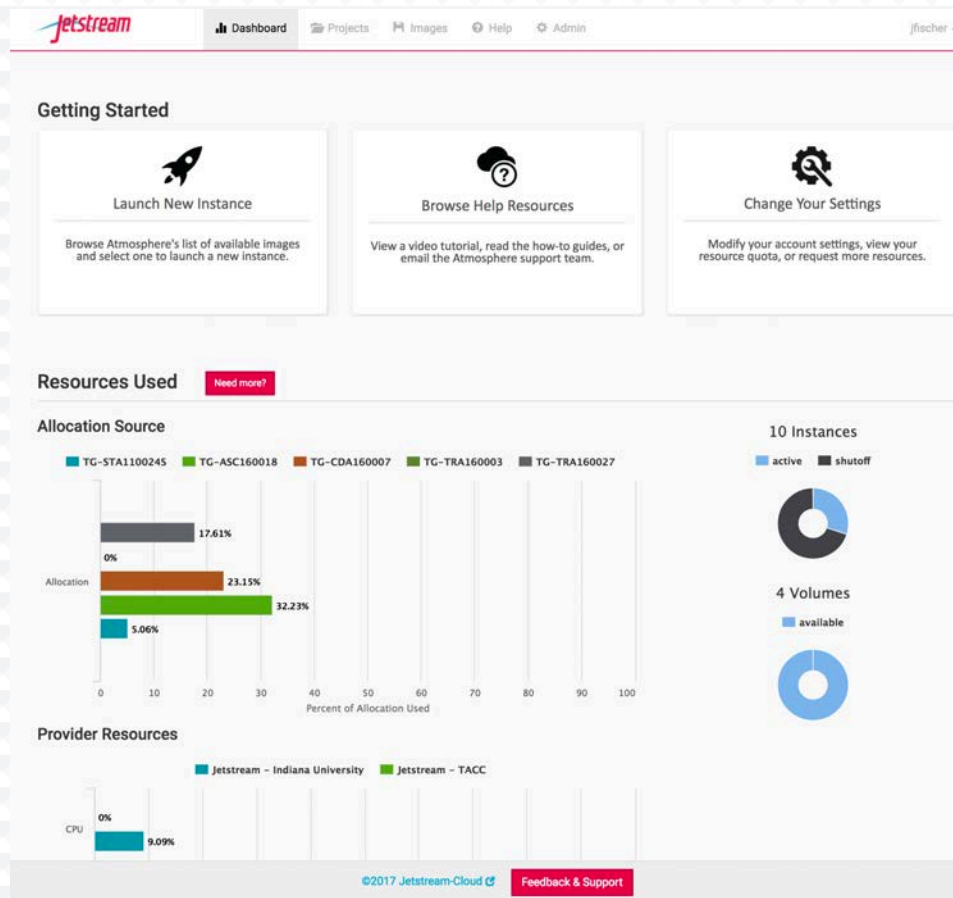




# Platform Overview



# The Jetstream Atmosphere web interface



# The Jetstream Atmosphere web interface

The screenshot displays the Jetstream Atmosphere web interface. At the top, there is a navigation bar with the Jetstream logo, a search bar, and menu items for Dashboard, Projects, Images, and Help. Below the navigation bar, there are tabs for SEARCH, FAVORITES (0), MY IMAGES (0), MY IMAGE REQUESTS, and TAGS. The main content area is titled "Image Search" and features a search input field with the placeholder text "Search across image name, tag or description". Below the search field, it indicates "Showing 57 of 57 Images".

The "Featured Images" section lists several image entries, each with a thumbnail icon, a title, a description, and a list of tags. The entries are:

- Centos 7 (7.2) Development GUI**: Imported Application - Centos 7 (7.2) Development GUI. Tags: CentOS, development, Featured, gui, iRODS.
- BioLinux 8**: Based on Ubuntu 14.04.3 -Trusty Tahr - server - cloudimg. Tags: bioinformatics, desktop, Featured, gui, m1\_small, Ubuntu, x2go.
- Ubuntu 14.04.3 Development GUI**: Based on Ubuntu 14.04.3 Development Patched up to date as of 12/15/16 Base Ubuntu 14.04.3 ... Tags: desktop, development, Featured, gui, iRODS, Ubuntu, vnc.
- Intel Development (CentOS 7)**: Intel compilers and development environment. Tags: CentOS, desktop, development, Featured, gui, Intel, m1\_small, vnc.
- R with Intel compilers (CentOS ...)**: R with Intel compilers built on CentOS 7 (7.3). Tags: CentOS, desktop, development, Featured, gui, Intel, m1\_small, vnc.
- Galaxy Standalone**: Galaxy 16.01 Standalone - based on Ubuntu 14.04.4 LTS. Tags: community-contributed, Featured, m1\_large, Ubuntu.

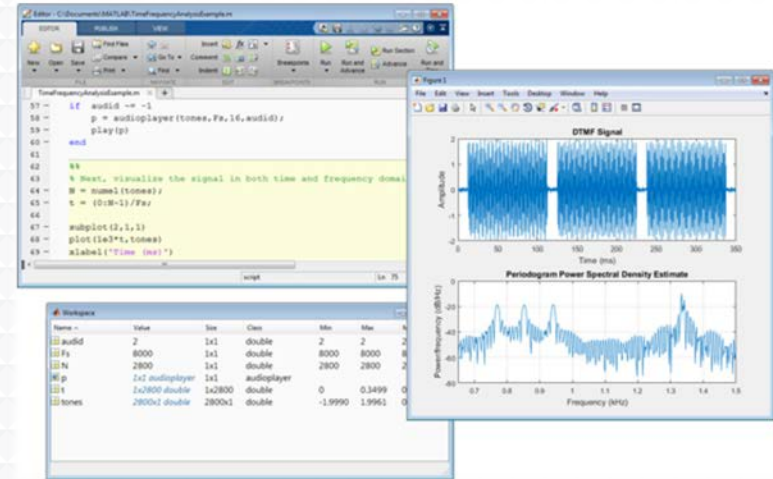
At the bottom of the interface, there is a footer with the copyright notice "©2017 Jetstream-Cloud" and a "Feedback & Support" button.



Discipline or area of interest	#of Jetstream allocations	SUs allocated on Jetstream	SU Increase/Decrease on Jetstream over previous year	% of SUs allocated on Jetstream	% of all SUs allocated on other XSEDE-supported systems
Behavioral Sciences	6	3,465,516	100% Increase	4.24%	0.61%
Biological Sciences	89	15,041,928	72.18% Increase	18.40%	3.59%
Biophysics	86	3,627,026	44.15% Decrease	4.44%	13.56%
Computer Science	72	6,883,269	33.28% Increase	8.42%	2.98%
Earth Sciences	37	5,476,250	37.06% Increase	6.70%	4.60%
Education and Training	128	16,599,512	2.62% Increase	20.31%	4.66%
Engineering	13	520,690	71.21% Increase	0.64%	1.75%
Materials Science	6	1,035,508	100% Increase	1.27%	13.89%
Mathematics	13	688,505	150.37% Increase	0.84%	0.90%
Molecular Science/Biochemistry	21	4,254,643	10.15% Decrease	5.20%	5.83%
Neuroscience	19	4,708,180	327.87% Increase	5.76%	1.98%
Physics	10	2,440,581	15.58% Decrease	2.99%	8.65%
Social Sciences and Humanities	28	2,409,633	192.27% Increase	2.95%	0.81%

# Matlab for researchers and educators

- Matlab and SimuLink and additional toolkits are installed on Jetstream
- You do NOT need to have a local license to use MATLAB on Jetstream
- If you are a researcher, and MATLAB or SimuLink... you're ready to go!
- If you are an engineering researcher, and you need other tools... let us know!

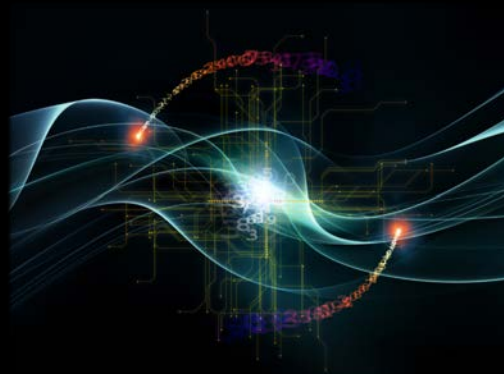




# Not just the usual suspects...

Physics, chemistry, and other “usual” HPC suspects are represented, but Jetstream also is home to projects on:

- Financial analysis / Economics
- Political science
- Humanities / Text analysis
- Network analysis
- Computer Science / Machine learning
- Satellite data analysis



# Jetstream for Education

Jetstream has been used in multiple graduate and undergraduate courses

- Management, Access, and Use of Big and Complex Data
- Multiple informatics and general bioinformatics courses
- Business Intelligence (big data and analysis)
- Research Topics in Music
- Multiple genetics and sequencing courses
- Multiple information security and assurance courses

Research Data Alliance workshops, Galaxy workshops, data analysis in finance using R, security and intrusion detection, and principles in cloud computing...



# Another Use Case: Galaxy riding Jetstream

Galaxy, a platform for biomedical research, focused on accessibility, transparency and reproducibility

- usegalaxy.org has more than 100,000 registered users executing 300,000+ jobs each month
- Many users need more capacity than the public quota, or other customizations

## Use Jetstream as a bursting platform

- From Galaxy Main, send jobs to a Slurm cluster running on Jetstream
- Run Galaxy Interactive Environments (Jupyter/RStudio containers) via a Swarm cluster running on Jetstream

## Use Jetstream as a self-service platform

- Pre-built Galaxy image configured with hundreds of tools and access to TBs of genomic reference data, available via the self-launch model within minutes
- Allows users to acquire (free) resources, and gives them complete control



# Jetstream Gateway Highlights

- **Galaxy-P (multi-omics)** – Tim Griffin, University of Minnesota
- **The Neuroscience Gateway** - Amitava Majumdar, University of California, San Diego
- **Parallelizing Development of Immunomics and Genomics Tools** - Ramy Arnaout, Beth Israel Deaconess Medical Center
- **Atmospheric Science in the Cloud: Enabling Data-Proximate Science** – Mohan Ramamurthy, UNIDATA (University Corporation for Atmospheric Research)
- **Science and Engineering Applications Grid (SEAGrid): A Gateway for Simulation of Molecular and Material Structures and Dynamics** – Sudhakar Pamidighantam, Indiana University
- **GIS Gateway** (Coming Soon!) – Eric Shook, University of Minnesota

And others!





# Expanding the reach: Jetstream REU Program



NSF Supplement for undergraduates

- 4 students participated in 2017
- 6 students participated in 2018
- 7 students participated in 2019

- REU student videos on YouTube  
<https://www.youtube.com/user/IUPTI>





# Jetstream usage highlights – 1 Sep 2019

- 398 XSEDE projects covering 72 fields of science and over 2300 active users representing 207 institutions
- **80%** of Jetstream users have **not used any other XSEDE system**
- >249M CPU hours allocated to XSEDE projects since June 2016
- 27 active science gateways
- 53 education/teaching allocations serving almost 1000 students
- 1438 mean active VMs in previous qtr, 1614 peak active VM count
- **Highest** user satisfaction in most recent XSEDE survey



# Jetstream Timeline...what comes next?

- Wrapping up our third year of operations with extension to November 2020
- Soliciting Research allocation requests plus Startup and Education allocations – including Science Gateways!
- Adding services as deemed useful/mature (Heat, Magnum, Trove, Manila, etc)
- Atmosphere enhancements on a regular cycle
- Working on partnerships with groups like HubZero and others to extend the value of Jetstream



# Requesting access to Jetstream

- Trial allocations available **TODAY**
  - <http://wiki.jetstream-cloud.org/Jetstream+Trial+Access+Allocation>
- You can request **startup** allocations **anytime**. (Startups are simple!)
- <http://wiki.jetstream-cloud.org/Jetstream+Allocations>
- You can request allocations for **educational** use **anytime**.
- Next submission period for large allocations is 15 Sep 2019 – 15 Oct 2019
- Research allocation: Project desc ( $\leq 10$  pages) and Scaling doc ( $\leq 5$  pages)
  - **We can help!**



# Where can I get help?

- **Wiki / Documentation:** <http://wiki.jetstream-cloud.org>
- User guides: <https://portal.xsede.org/user-guides>
- XSEDE KB: <https://portal.xsede.org/knowledge-base>
- Email: [help@xsede.org](mailto:help@xsede.org)
- Campus Champions: <https://www.xsede.org/campus-champions>
- Introduction to Jetstream Virtual Workshop: <https://cvw.cac.cornell.edu/jetstream/>
- Jetstream Allocations Virtual Workshop: <https://cvw.cac.cornell.edu/JetstreamReq/>

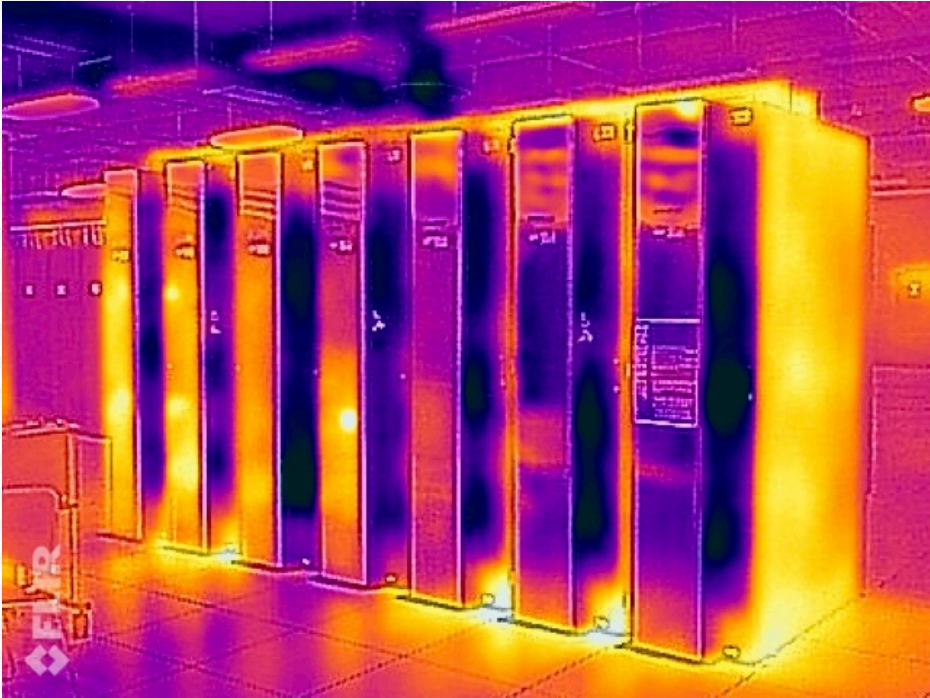


# Just for fun: Happy cluster / Angry Cluster



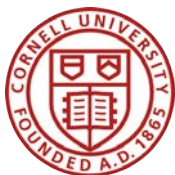


# Infrared image of Jetstream



**ChilledDoor<sup>™</sup>**  
Rack Cooling System  
by **motivair<sup>™</sup>**

# Jetstream Partners



funded by the National Science Foundation  
Award #ACI-1445604



# Questions?

- Project website: <http://jetstream-cloud.org/>
- Project email: [help@jetstream-cloud.org](mailto:help@jetstream-cloud.org) Direct email: [jeremy@iu.edu](mailto:jeremy@iu.edu)

## License Terms

- Fischer, Jeremy. Oct 9, 2019. Jetstream Overview – University of South Dakota. Also available at: <http://Jetstream-cloud.org/research/publications.php>
- Jetstream is supported by NSF award 1445604 (David Y. Hancock, IU, PI)
- XSEDE is supported by NSF award 1053575 (John Towns, UIUC, PI)
- This research was supported in part by the Indiana University Pervasive Technology Institute, which was established with the assistance of a major award from the Lilly Endowment, Inc. Opinions presented here are those of the author(s) and do not necessarily represent the views of the NSF, IUPTI, IU, or the Lilly Endowment, Inc.
- Items indicated with a © are under copyright and used here with permission. Such items may not be reused without permission from the holder of copyright except where license terms noted on a slide permit reuse.
- Except where otherwise noted, contents of this presentation are copyright 2015 by the Trustees of Indiana University.
- This document is released under the Creative Commons Attribution 3.0 Unported license (<http://creativecommons.org/licenses/by/3.0/>). This license includes the following terms: You are free to share – to copy, distribute and transmit the work and to remix – to adapt the work under the following conditions: attribution – you must attribute the work in the manner specified by the author or licensor (but not in any way that suggests that they endorse you or your use of the work). For any reuse or distribution, you must make clear to others the license terms of this work.

